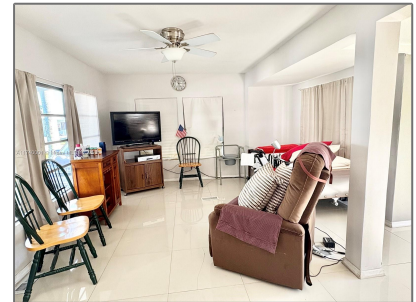


# Residential For Sale

710 Sqft - 1941 SW 85th Ter, Davie, Florida 33324



## Basic [Details](#)

Property Type:	<b>Residential</b>
Listing Type:	<b>For Sale</b>
Listing ID:	<b>A11740001</b>
Price:	<b>\$120,000</b>
Bedrooms:	<b>2</b>
Bathrooms:	<b>1</b>
Square Footage:	<b>710 Sqft</b>
Year Built:	<b>1964</b>
Lot Area:	<b>3,200 Sqft</b>

## Features

✓	Heating System:	<a href="#">Central</a>
✓	Cooling System:	<a href="#">Central Air</a>
✓	View:	<a href="#">Garden</a>
✓	Pet Allowed	
✓	Patio:	<a href="#">Open Porch</a>

## Address [Map](#)

Country:	<b>US</b>
State:	<b>FL</b>
County:	<b>Broward County</b>
City:	<b>Davie</b>
Zipcode:	<b>33324</b>
Street:	<b>1941 SW 85th Ter</b>
Building Name:	<b>PARK CITY SEC TWO</b>
Floor Number:	<b>0</b>
Longitude:	<b>W81° 44' 15.2"</b>

Latitude: **N26° 5' 45"**

Agent [Info](#)

---



Daniel Lombardi  
☎ (305) 695-1600  
☎ (786) 525-6127  
✉ [daniel@lomardiproperties.com](mailto:daniel@lomardiproperties.com)

-

---