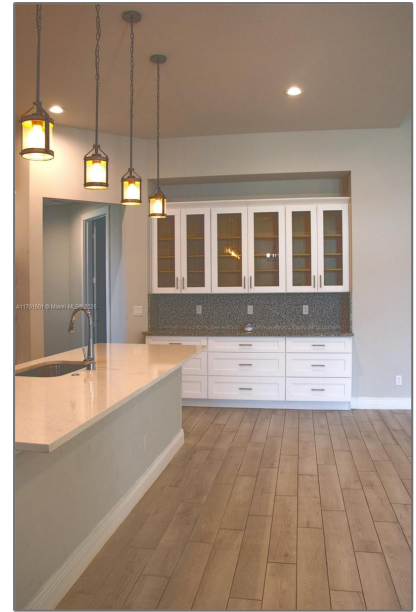
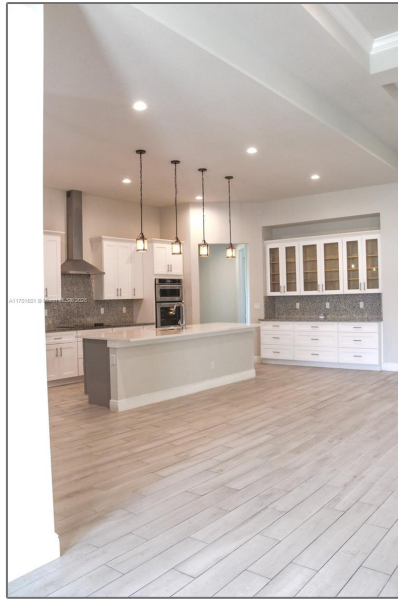


# Residential For Sale

2,887 Sqft - 5231 NW Iredell St, Port St. Lucie,  
Florida 34986



## Basic [Details](#)

Property Type:	<b>Residential</b>
Listing Type:	<b>For Sale</b>
Listing ID:	<b>A11701501</b>
Price:	<b>\$680,000</b>
Bedrooms:	<b>5</b>
Rooms:	<b>1</b>
Bathrooms:	<b>4</b>
Square Footage:	<b>2,887 Sqft</b>
Year Built:	<b>2021</b>
Lot Area:	<b>15,246 Sqft</b>

## Features

✓	Heating System:	<a href="#">Electric</a>
✓	Cooling System:	<a href="#">Central Air, Ceiling Fan(s)</a>
✓	Pet Allowed	
✓	Patio:	<a href="#">Patio, Screened Porch</a>
✓	Furnished:	<a href="#">Unfurnished</a>

## Address [Map](#)

Country:	<b>US</b>
State:	<b>FL</b>
County:	<b>St Lucie County</b>

City:	<b>Port St. Lucie</b>
Zipcode:	<b>34986</b>
Street:	<b>5231 NW Iredell St</b>
Building Name:	<b>PORT ST LUCIE SECTION 47</b>
Floor Number:	<b>0</b>
Longitude:	<b>W81° 36' 43.4"</b>
Latitude:	<b>N27° 22' 15.6"</b>

Agent [Info](#)

---



Daniel Lombardi  
☎ (305) 695-1600  
☎ (786) 525-6127  
✉ [daniel@lomardiproperties.com](mailto:daniel@lomardiproperties.com)

-

---