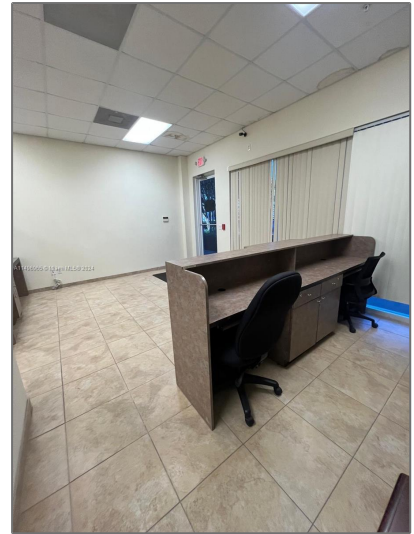


# Commercial Sale For Sale

- 951 Sansburys Way # 202, West Palm Beach,  
Florida 33411



## Basic [Details](#)

Property Type:	<b>Commercial Sale</b>
Listing Type:	<b>For Sale</b>
Listing ID:	<b>A11496965</b>
Price:	<b>\$2,500</b>
Year Built:	<b>2007</b>
Lot Area:	<b>2,656 Sqft</b>

## Address [Map](#)

Country:	<b>US</b>
State:	<b>FL</b>
County:	<b>Palm Beach County</b>
City:	<b>West Palm Beach</b>
Zipcode:	<b>33411</b>
Street:	<b>951 Sansburys Way # 202</b>
Floor Number:	<b>0</b>
Longitude:	<b>W81° 48' 52"</b>
Latitude:	<b>N26° 41' 27.9"</b>

## Agent [Info](#)



Daniel Lombardi

☎ (305) 695-1600

☎ (786) 525-6127

✉ [daniel@lomardiproperties.com](mailto:daniel@lomardiproperties.com)

---