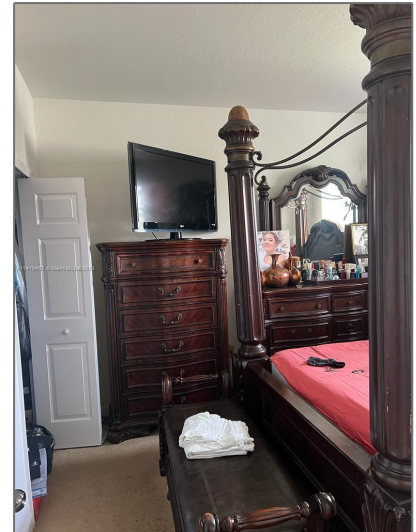


# Residential For Sale

930 Sqft - 1568 SE 26th St # 201, Homestead,  
Florida 33035



## Basic [Details](#)

Property Type:	<b>Residential</b>
Listing Type:	<b>For Sale</b>
Listing ID:	<b>A11410467</b>
Price:	<b>\$213,460</b>
Bedrooms:	<b>2</b>
Bathrooms:	<b>2</b>
Square Footage:	<b>930 Sqft</b>
Year Built:	<b>2006</b>

## Address [Map](#)

Country:	<b>US</b>
State:	<b>FL</b>
County:	<b>Miami-Dade County</b>
City:	<b>Homestead</b>
Zipcode:	<b>33035</b>
Street:	<b>1568 SE 26th St # 201</b>

## Features

✓	Heating System:	<b>Central</b>
✓	Cooling System:	<b>Central Air</b>
✓	Pet Allowed:	<b>Restrictions Or Possible Restrictions</b>
✓	Patio:	<b>Patio</b>

Building Name:   **SHOMA CONDO AT  
KEYS COVE**

Floor Number:                               **0**

Longitude:                               **W81° 32' 45"**

Latitude:                               **N25° 26' 46.2"**

Agent [Info](#)

---



Daniel Lombardi  
 (305) 695-1600  
 (786) 525-6127  
 [daniel@lomardiproperties.com](mailto:daniel@lomardiproperties.com)

-

---