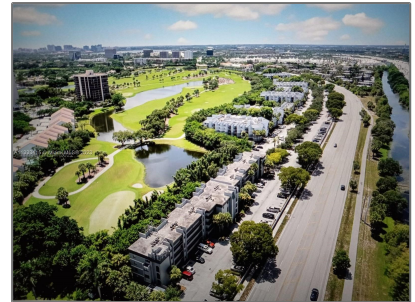
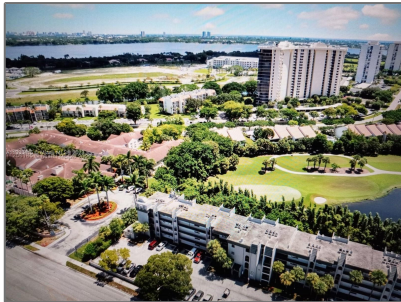


# Residential For Sale

1,030 Sqft - 2050 N Congress Ave # 206, West  
Palm Beach, Florida 33401



## Basic [Details](#)

Property Type:	<b>Residential</b>
Listing Type:	<b>For Sale</b>
Listing ID:	<b>A11333415</b>
Price:	<b>\$197,500</b>
Bedrooms:	<b>2</b>
Bathrooms:	<b>2</b>
Square Footage:	<b>1,030 Sqft</b>
Year Built:	<b>1981</b>

## Features

✓	Heating System:	<a href="#">Central, Electric</a>
✓	Cooling System:	<a href="#">Central Air, Electric</a>
✓	Fence:	<a href="#">Fenced</a>
✓	View:	<a href="#">Garden View</a>
✓	Pet Allowed:	<a href="#">Maximum 20 Lbs</a>
✓	Patio:	<a href="#">Open Balcony</a>
✓	Furnished:	<a href="#">Unfurnished</a>

## Address [Map](#)

Country:	<b>US</b>
State:	<b>FL</b>
County:	<b>Palm Beach County</b>
City:	<b>West Palm Beach</b>
Zipcode:	<b>33401</b>
Street:	<b>2050 N Congress Ave # 206</b>
Building Name:	<b>PRESIDENTIAL GOLFVIEW</b>
Floor Number:	<b>0</b>

Longitude: **W81° 54' 37.9"**

Latitude: **N26° 44' 4.9"**

Agent [Info](#)

---



Daniel Lombardi  
☎ (305) 695-1600  
☎ (786) 525-6127  
✉ [daniel@lomardiproperties.com](mailto:daniel@lomardiproperties.com)

-

---