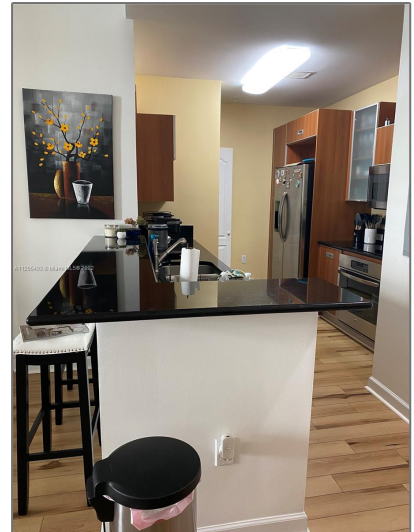


# Residential Lease For Rent

1,160 Sqft - 410 Evernia St # 231, West Palm  
Beach, Florida 33401



## Basic [Details](#)

Property Type:	<b>Residential Lease</b>
Listing Type:	<b>For Rent</b>
Listing ID:	<b>A11295493</b>
Price:	<b>\$3,100</b>
Bedrooms:	<b>2</b>
Bathrooms:	<b>2</b>
Square Footage:	<b>1,160 Sqft</b>
Year Built:	<b>2007</b>

## Address [Map](#)

Country:	<b>US</b>
State:	<b>FL</b>
County:	<b>Palm Beach County</b>
City:	<b>West Palm Beach</b>
Zipcode:	<b>33401</b>
Street:	<b>410 Evernia St # 231</b>

## Features

✓	Swimming Pool:	<a href="#">Community, In Ground</a>
✓	Pet Allowed:	<a href="#">Restrictions Or Possible Restrictions</a>
✓	Patio:	<a href="#">Open Balcony</a>
✓	Furnished:	<a href="#">Unfurnished</a>

Building Name:	<b>WHITNEY CONDO</b>
Floor Number:	<b>0</b>
Longitude:	<b>W81° 56' 44.6"</b>
Latitude:	<b>N26° 42' 39.6"</b>

Agent [Info](#)

---



Daniel Lombardi  
☎ (305) 695-1600  
☎ (786) 525-6127  
✉ [daniel@lomardiproperties.com](mailto:daniel@lomardiproperties.com)

-

---