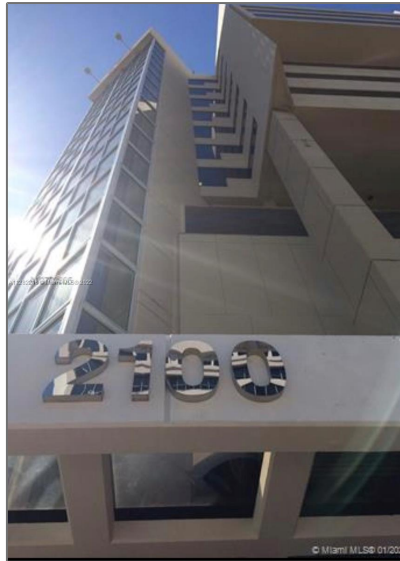
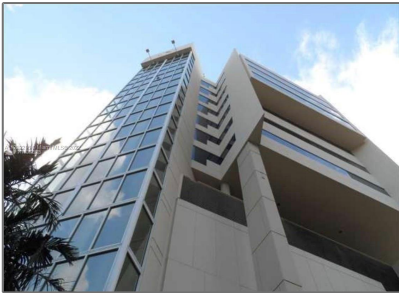


# Commercial Sale For Sale

- 2100 Ponce De Leon Blvd # 1050, Coral Gables,  
Florida 33134



## Basic [Details](#)

Property Type:	<b>Commercial Sale</b>
Listing Type:	<b>For Sale</b>
Listing ID:	<b>A11282216</b>
Price:	<b>\$3,500</b>
Year Built:	<b>1981</b>
Lot Area:	<b>43,560 Sqft</b>

## Features

✓ Heating System:	<a href="#">Central Building A/c,</a> <a href="#">Central Individual A/c</a>
✓ Cooling System:	<a href="#">Central Building A/c,</a> <a href="#">Central Individual A/c</a>
✓ Parking:	<b>2</b>

## Address [Map](#)

Country:	<b>US</b>
State:	<b>FL</b>
County:	<b>Miami-Dade County</b>
City:	<b>Coral Gables</b>
Zipcode:	<b>33134</b>
Street:	<b>2100 Ponce De Leon Blvd # 1050</b>
Floor Number:	<b>0</b>
Longitude:	<b>W81° 44' 27.3"</b>

Latitude:

**N25° 45' 12"**

## Agent [Info](#)

---



Daniel Lombardi

☎ (305) 695-1600

☎ (786) 525-6127

✉ [daniel@lomardiproperties.com](mailto:daniel@lomardiproperties.com)

---